

# SPECIFICATION SHEET

**PILOT CRUSHTEC**®

CRUSHING AFRICA'S ROCK

## PILOT MODULAR

*IC50 Horizontal Shaft Impact Crusher*

PRODUCT NAME:	Pilot Modular IC50 Horizontal Shaft Impact Crusher
DOCUMENT NO:	PCS-07-02-132
REV:	00
DATE:	21/06/2023



**NO CIVILS REQUIRED**



**HEAVY DUTY DESIGN**



**RAPID SETUP TIME**



**LOW OPERATING COSTS**

### PRODUCT DESCRIPTION

The IC50 is extremely versatile, with a high performance and simple maintenance, aimed at new or smaller operators who do not have large budgets for capital expenditure and require small capacities. The Pilot Modular IC50 horizontal shaft impact (HSI) crusher is designed to crush low to medium abrasion material and to be conveyor fed.

The crusher is equipped with a heavy-duty fixed hammer rotor, three high chrome, heavy-duty blow-bars, Hardox 400 Brinell liners and impact plates, and a feed chute with rubber curtains. Its split and hinged upper housing makes for easy opening. The rotor is capable of speeds between 680 and 970 rpm and is able to handle feed material of up to 300mm in soft rock and up to 150mm in hard rock applications.

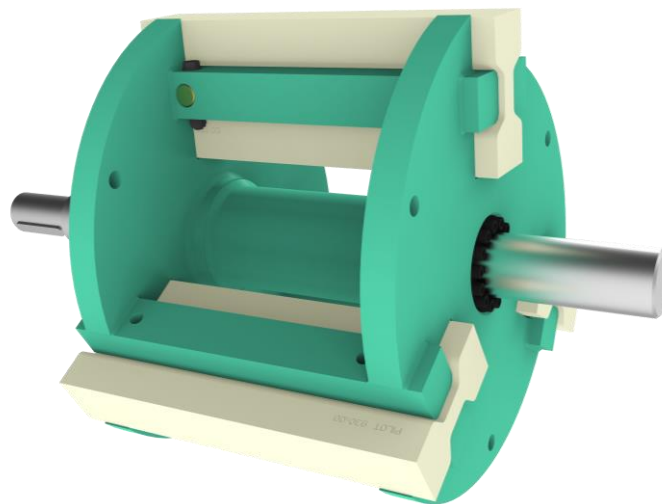
**IC50 HORIZONTAL SHAFT IMPACT CRUSHER SPECIFICATIONS**

**HORIZONTAL SHAFT IMPACT CRUSHER**

<b>Rotor:</b>	600mm diameter x 500mm width Heavy-duty three hammer rotor Reversible hammers with four working faces Rotor speed between 680 and 970rpm (factory set)
<b>Crusher Housing:</b>	Split and hinged upper housing for easy maintenance. Manual hydraulic opening Feed chute with rubber curtains Feed opening 500mm x 470mm 400 Brinell liners and impact plates
<b>Skid Frame:</b>	Heavy-duty skid frame with maintenance platform Handrails, safety guards and cat ladder Dead box chute for crusher discharge
<b>Drive:</b>	30kW 380V or 525V electric motor SPB Pulleys and V-belt drive
<b>Feed Size:</b>	Soft rock up to 300mm Hard rock up to 100mm
<b>Crusher Capacity:</b>	Up to 50tph (Application dependant)

**ESTIMATED WEIGHT**

<b>Total:</b>	±2,750 kg
---------------	-----------

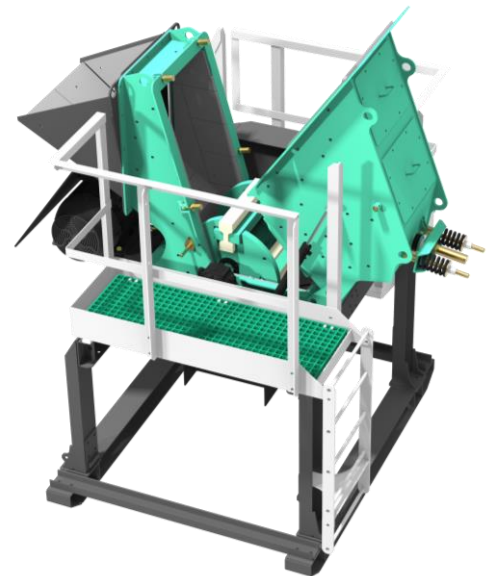
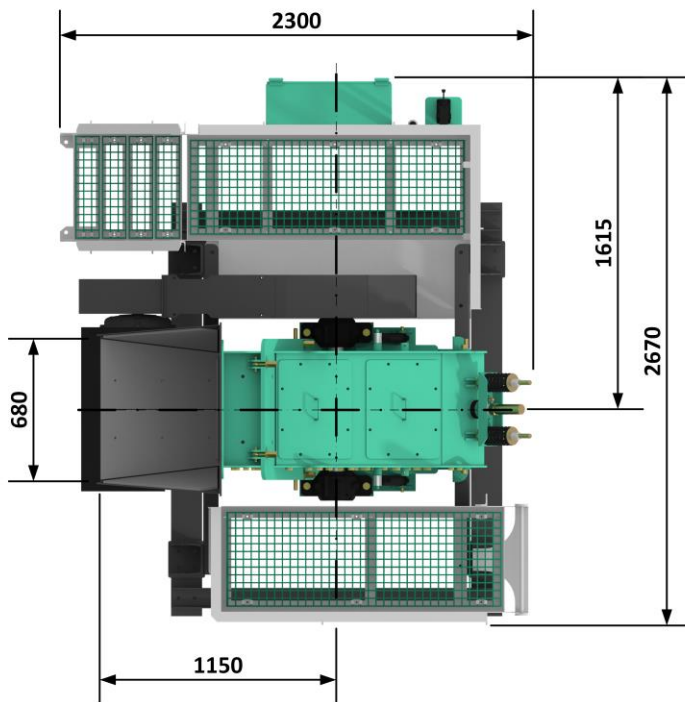
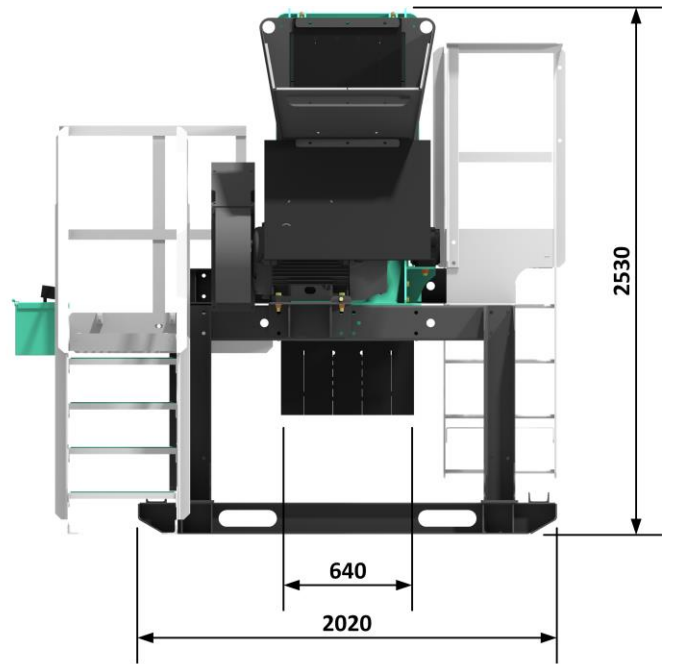
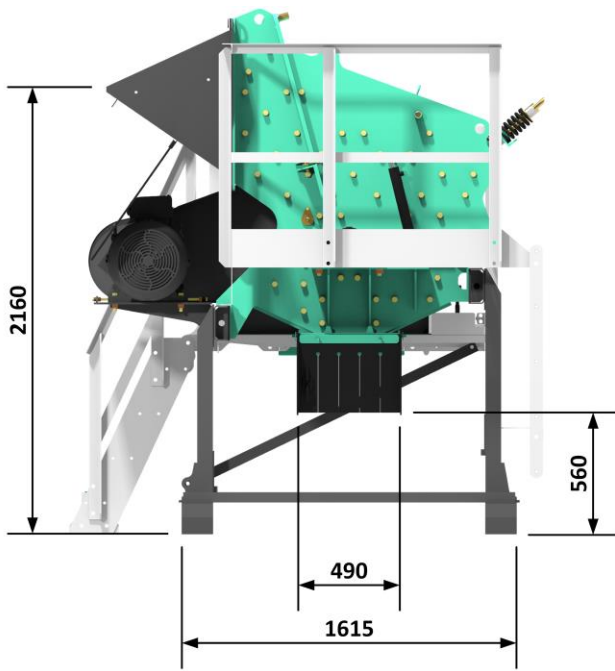


# IC50

[www.pilotcrushtec.com](http://www.pilotcrushtec.com) | [sales@pilotcrushtec.com](mailto:sales@pilotcrushtec.com) | +27 (11) 842 5600

All reasonable steps have been taken to ensure the accuracy of the publication, however, due to Pilot Crushtec International's policy of continual product development, we reserve the right to make changes in specifications shown herein or improvements at any time without notice or obligation. All capacities and feed sizes are provided as an application aid only. No warranties are expressed or implied.

**WORKING DIMENSIONS**



**PILOT**  
**MODULAR**®

[www.pilotcrushtec.com](http://www.pilotcrushtec.com) | [sales@pilotcrushtec.com](mailto:sales@pilotcrushtec.com) | +27 (11) 842 5600

All reasonable steps have been taken to ensure the accuracy of the publication, however, due to Pilot Crushtec International's policy of continual product development, we reserve the right to make changes in specifications shown herein or improvements at any time without notice or obligation. All capacities and feed sizes are provided as an application aid only. No warranties are expressed or implied.